



37 Summerfield Road

Hemsby, NR29 4LY

Price Guide £390,000-£400,000



## 37 Summerfield Road

Hemsby, NR29 4LY

\*GUIDE PRICE £390,000-£400,000\* Aldreds are pleased to offer this rare opportunity to acquire an individually designed, new build detached bungalow which is nearing completion and available for early occupation. This spacious bungalow has been finished to a high specification and designed for ease of maintenance and lower running costs with the benefit of solar panels, an air source heating system and quality double glazed windows. The property would make an ideal retirement home being in a quiet residential area with accommodation comprising of an entrance hall, lounge, fitted kitchen/diner with built in appliances, master bedroom with en-suite shower room, two further double sized bedrooms and a family bathroom. Outside there are private gardens with a westerly aspect and ample driveway parking leading to the detached garage with an electric door. Viewing is strongly recommended

### Entrance Hall

Part double glazed composite entrance door, under floor heating, built in airing cupboard housing the pressurised cylinder and underfloor heating manifold, doors leading off to:

### Lounge

15'5" x 12'6" (4.71 x 3.83)

Generous size with double glazed French doors on to the rear garden, under floor heating, recessed spot lights, tv point.

### Kitchen/Diner

13'5" x 9'4" (4.10 x 2.87)

Modern coloured finish shaker style kitchen with wall and matching base units with work surfaces over and matching upstands, single drainer stainless steel sink unit with mixer taps, space and plumbing for a washing machine, integrated slimline dishwasher, built in electric oven, four ring ceramic hob, coloured glass splashback panel and stainless steel extractor hood over, double glazed window to front aspect, part double glazed composite door to side, under floor heating, recessed spot lights.

### Bedroom 1

14'9" x 11'3" (4.50 x 3.45)

Double glazed window to front aspect, under floor heating, wall mount tv point, recessed spot lights, door to:

### En-Suite Shower Room

10'7" x 4'8" (3.25 x 1.44)

Full width shower cubicle with aqua panelled walls, mains fed shower fitting and glazed shower screen, vanity unit with inset wash basin, low level wc, part tiled splashbacks, extractor fan, recessed spot lights, under floor heating, frosted double glazed window to side aspect.

### Bedroom 2

9'10" x 7'10" (3.00 x 2.40)

Double glazed window to front aspect, under floor heating, tv point, recessed spot lights, door to:

### Bedroom 3

9'10" x 7'10" (3.00 x 2.40)

Double glazed window to front aspect, under floor heating, tv point, recessed spot lights, door to:

### Family Bathroom

10'7" x 4'8" (3.25 x 1.44)

White suite comprising panelled bath, vanity unit with an inset wash basin, low level wc, part tiled wall splashbacks, underfloor heating, extractor fan, recessed spot lights, frosted double glazed window to rear aspect.





### Outside

To the front of the property is an area of lawned garden with a paved pathway leading to the entrance, low retaining brick boundary wall. Adjacent grey block pavior driveway providing ample parking and access to the brick and tiled pitched roof garage 5.22m x 2.75m with electric roller door, power and lighting, personal door to the rear. Access leads to the rear garden where there are two raised planters, stone pathway which opens in to the main garden which is lawned with a suntrap patio, outside tap and lighting, fenced boundaries.

### Tenure

Freehold

### Services

Mains water, electric and drainage.

### Council Tax

Great Yarmouth Borough Council - TBC

### Agents Note

A choice of floor coverings are available to the customer (subject to build stage).

### Location

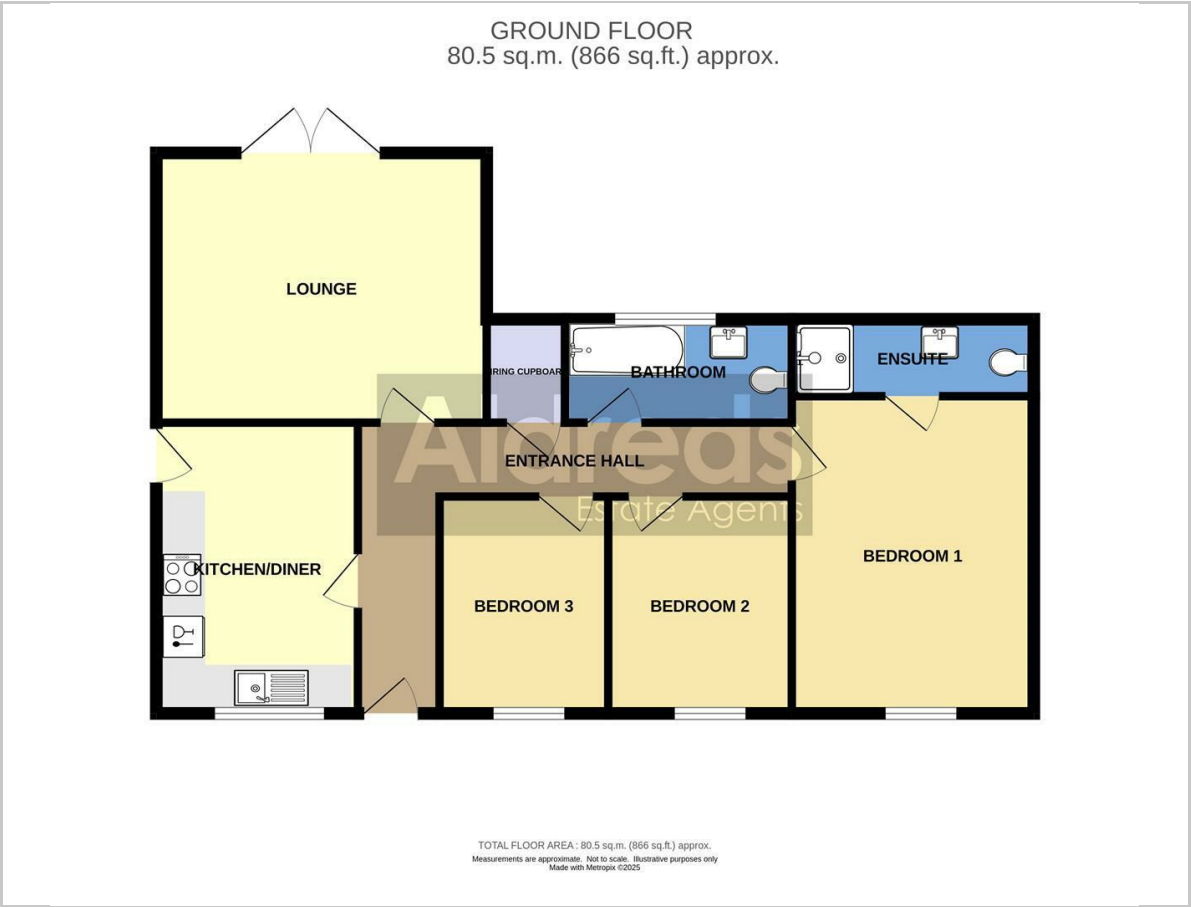
Hemsby is a coastal village approximately 7 miles north of Great Yarmouth. There is a variety of shops, post office, medical centre, first school with older children attending the middle and high schools in Martham, a school bus service link, regular bus service to and from Great Yarmouth. The beaches are one of the major draws of Hemsby, with miles of sandy coastline. Large sand dunes form a natural barrier between the beach and the village behind it. Hemsby is split into two parts: Hemsby Village and Hemsby Beach. Hemsby Village is mainly the residential area located about a mile inland. Kingsway this is also the main location for buses into Great Yarmouth and Martham.

### Directions

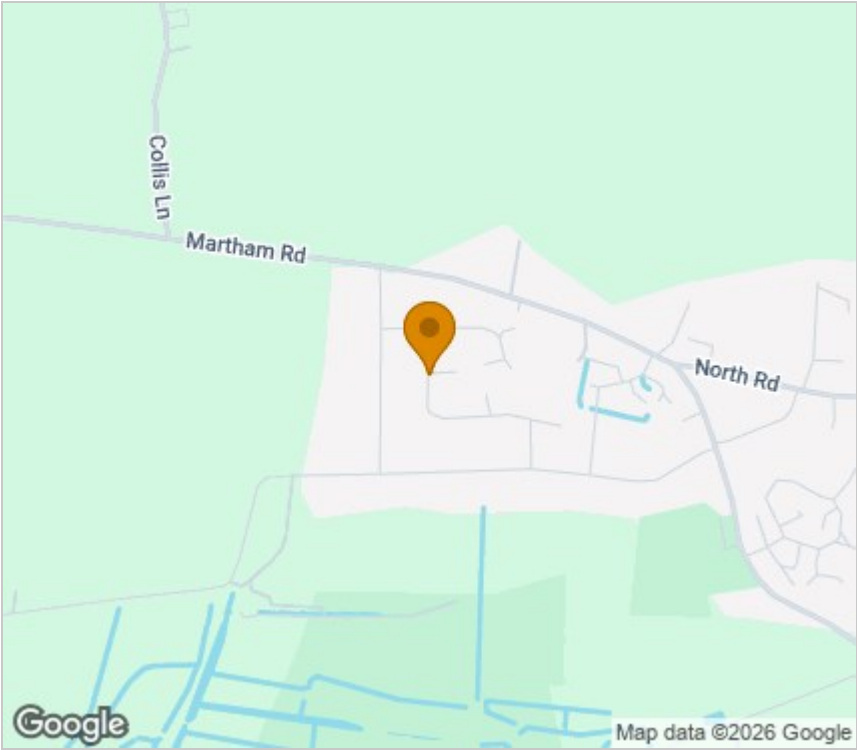
From the Yarmouth office head north along the A149 Caister Road, continue past the Yarmouth Stadium, at the roundabout turn left onto the Caister Bypass, continue over the next roundabout into Jack Chase Way, continue over the next roundabout into Scratby Road, continue into Yarmouth Road at the junction with Newport Road, bear round to the left, continue to the crossroads with The Street, continue straight ahead into Waters Lane passing the recreational ground on the left, turn left into Common Road. turn right into Springfield Road, continue to the 'T' junction, turn left into Springfield North, continue into Summerfield Road and follow the road around to the far corner of the cul de sac where the property can be found on the left hand side.



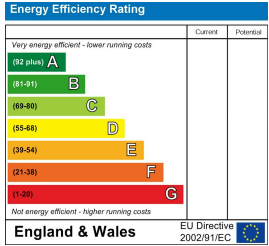
Floor Plan



Area Map



Energy Efficiency Graph



Viewing

Please contact our Aldreds Great Yarmouth Office on 01493 844891 if you wish to arrange a viewing appointment for this property or require further information.

**Disclaimer**  
These particulars are issued on an understanding that all negotiations shall be conducted through Messrs. Aldreds. Please note: Messrs. Aldreds for themselves and for the vendors or lessors of this property whose agents they are given notice that: 1. Particulars are set out as a general outline only for guidance of intending purchasers or lessees, and do not constitute nor constitute part of, an offer or contract. 2. All descriptions, dimensions, references to condition and necessary permissions for use and occupation, and other details are given without responsibility and any intending purchasers or tenants should not rely on them as statements or representations of fact but must satisfy themselves by inspection or otherwise as to the correctness of each of them. 3. No person in the employment of Messrs. Aldreds has any authority to make or give any representation or warranty whatever in relation to this property. 4. If you are proposing to visit the property and are travelling some distance please check with Aldreds on the issue of availability prior to travelling. 5. Aldreds Property Consultants and associated services may offer additional services to the prospective purchaser for which they will be entitled to receive a commission. Aldreds are pleased to be working with Mortgage Advice Bureau. They're an award-winning mortgage broker with over 1,400 advisers across the UK, and have access to over 12,000 mortgage products from over 90 lenders. Aldreds Estate Agents Ltd receive a commission of £200 on each completed case. Your home may be repossessed if you do not keep up repayments on your mortgage. There may be a fee for mortgage advice. The actual amount you pay will depend upon your circumstances. The fee is up to 1%, but a typical fee is 0.3% of the amount borrowed. Mortgage Advice Bureau is a trading name of Mortgage Seeker Limited which is an appointed representative of Mortgage Advice Bureau Limited and Mortgage Advice Bureau (Derby) Limited which are authorised and regulated by the Financial Conduct Authority. Mortgage Seeker Limited Registered Office: Lovewell Blake, Sixty Six North Quay, Great Yarmouth, Norfolk, NR30 1HE. Registered in England Number: 03721415. 6. Potential purchasers should check with their providers that the broadband and mobile phone coverage they would require is available.

17 Hall Quay, Great Yarmouth, Norfolk, NR30 1HJ  
Tel: 01493 844891 Email: [yarmouth@aldreds.co.uk](mailto:yarmouth@aldreds.co.uk) <https://www.aldreds.co.uk/>  
Registered in England Reg. No. 08945751 Registered Office: 17 Hall Quay, Great Yarmouth, Norfolk NR30 1HJ  
Directors: Mark Duffield B.S.c. FRICS. Dan Crawley MNAEA Paul Lambert MNAEA